

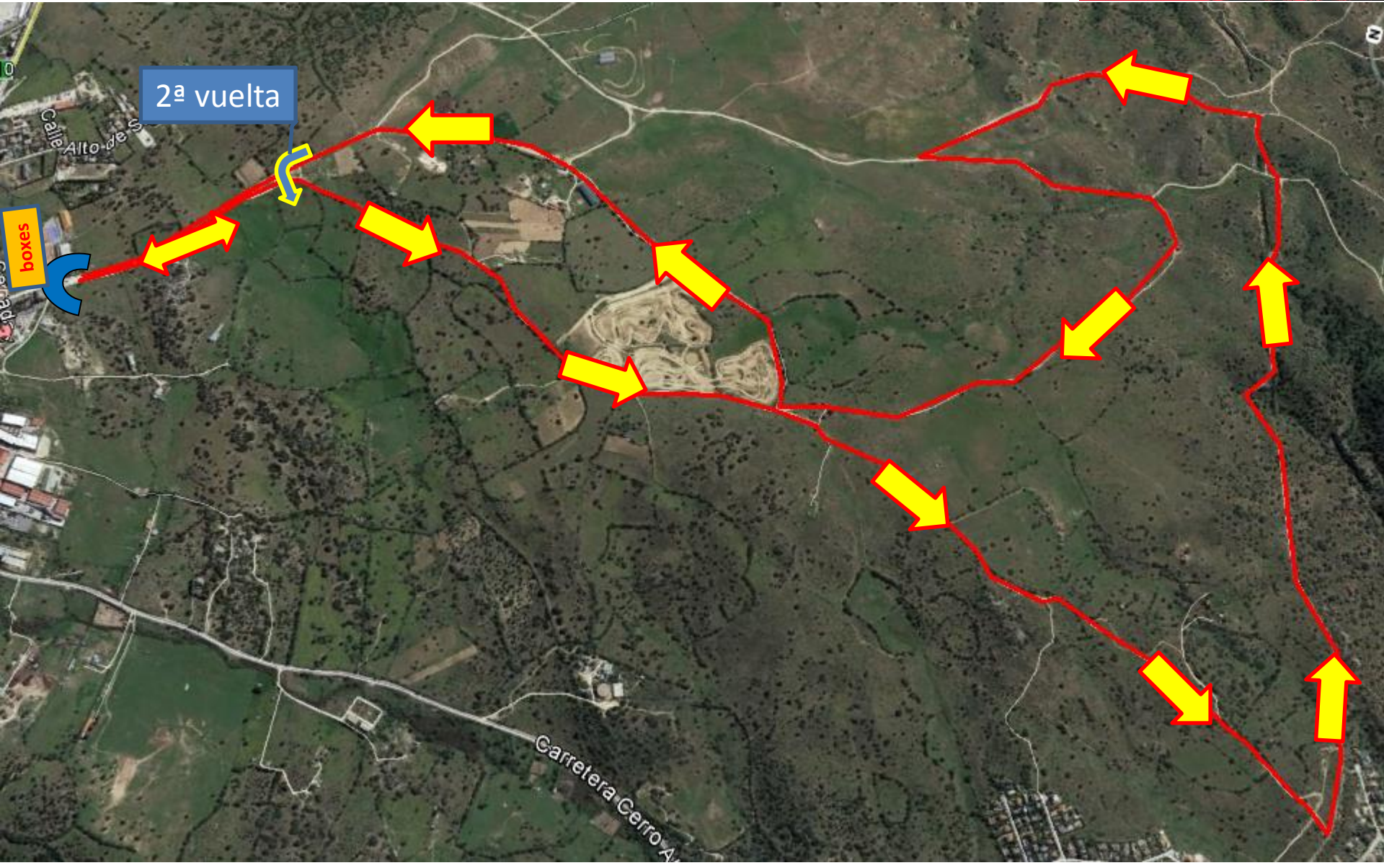
VALDEMORILLO

Recorrido RUN1: 4,5 km.



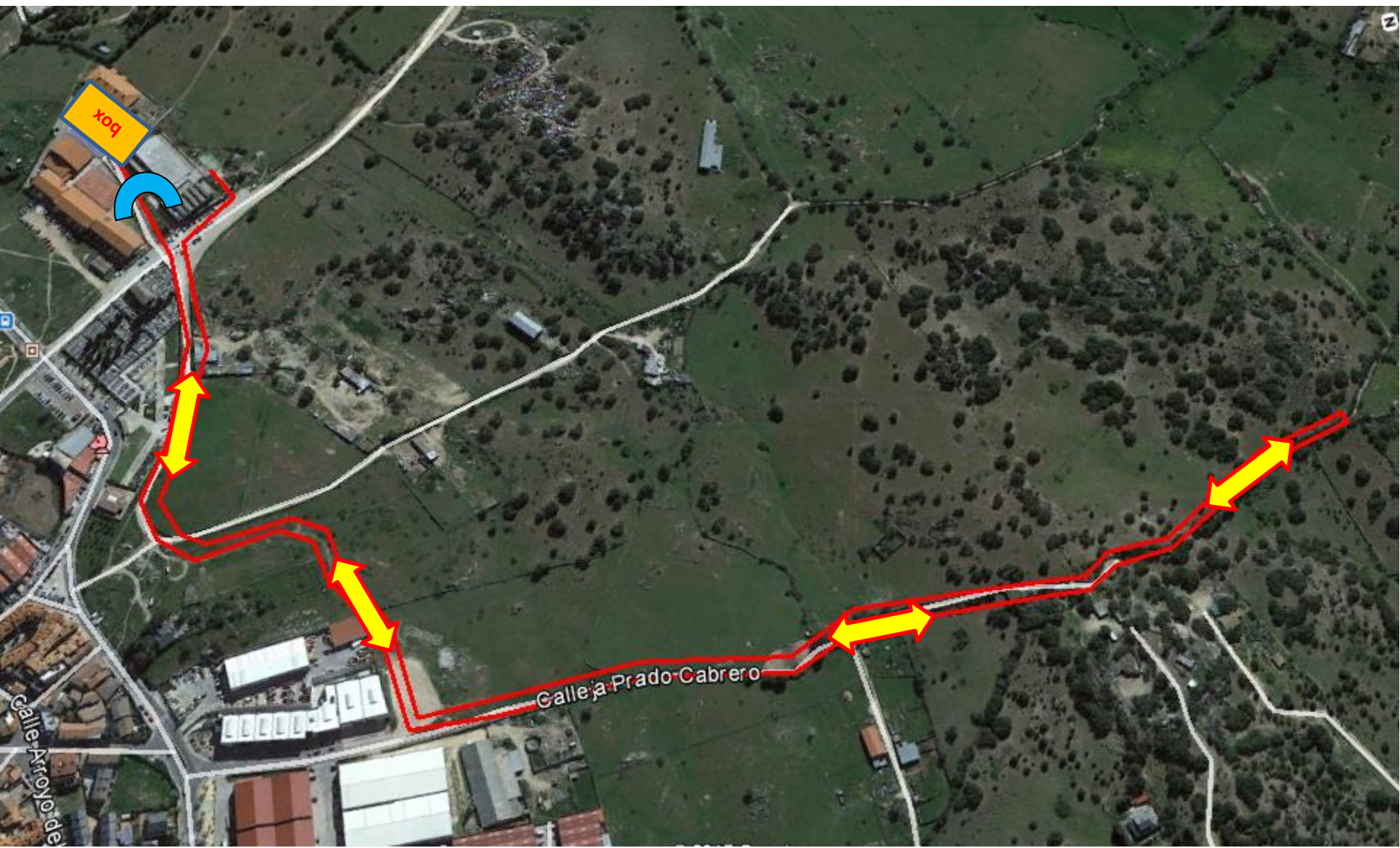
VALDEMORILLO

Recorrido MTB : 18 km (2 vueltas)



VALDEMORILLO

Recorrido RUN2: 2,5 km.





VALDEMORILLO

PARKING Y
ACCESOS A BOXES

Parking

Boxes

Parking





VALDEMORILLO

Perfil 1ª fase : RUN1 – 4,5km



Perfil 2ª fase : BIKE 18 km



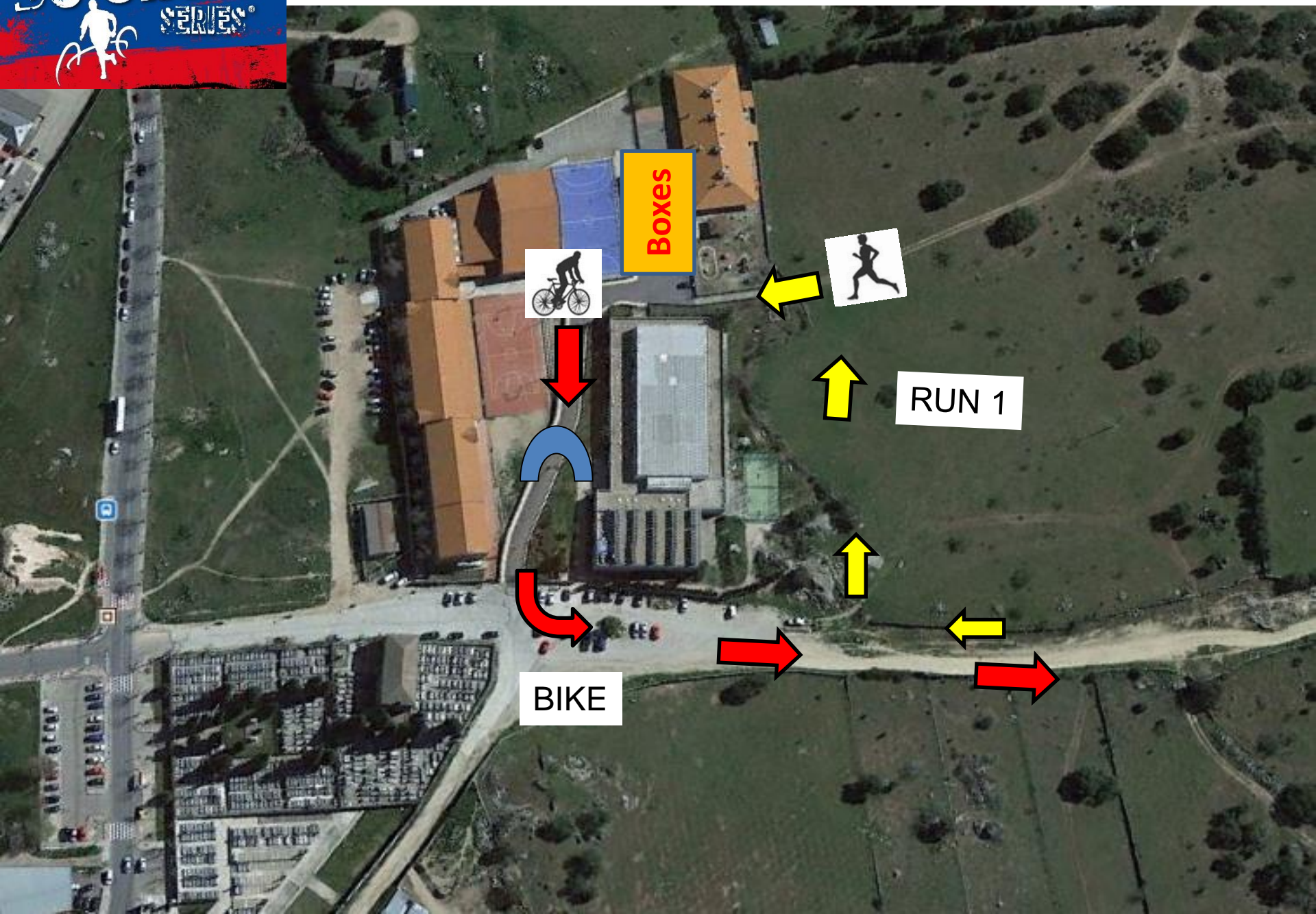
Perfil 3ª fase : RUN2 - 2 km





VALDEMORILLO

TRANSICIÓN 1 : RUN 1 - BIKE





VALDEMORILLO

TRANSICIÓN 2 : BIKE – RUN 2



Boxes

RUN 2

BIKE